

# MAF

## NEW MASS AIRFLOW SENSORS



## A **NEW** ALTERNATIVE TO MASS AIRFLOW SENSORS

**Blue  
Streak**  
ELECTRONICS *NEW*



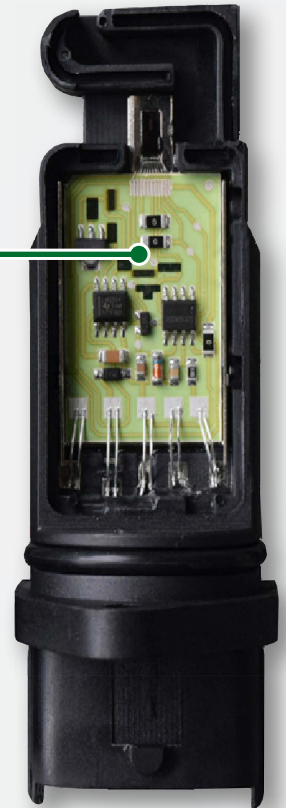
# BETTER MATERIAL FOR BETTER RESULTS

## THE CERAMIC ADVANTAGE



Epoxy PCB

Ceramic PCB with Double Binding



Technology moves forward at an ever increasing pace and here at Blue Streak Electronics® we always have our eye on the horizon, adopting the latest developments in the advancement and improvement of automotive hardware.

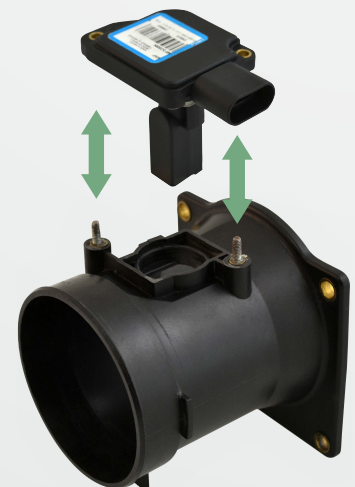
Our NEW Mass Airflow Sensor lineup will be incorporating the ceramic PCB's to provide you the very best product with the added enhancements:

- Resistors are digitally calibrated for optimal precision
- Superior thermal stability under even the most extreme under-the-hood temperature changes
- Higher consistency in voltage readings at all rpms
- More efficient heat dissipation to extend the service life of the component
- Double binding for improved sensor reliability

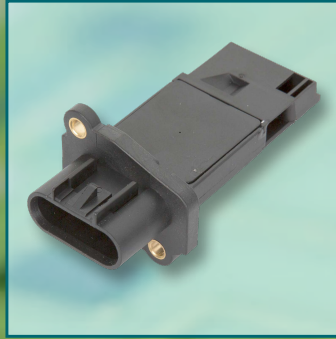
## SIMPLIFY YOUR WORKFLOW

**TIME** is the most precious commodity for any business and our Mass Airflow Sensor program is geared towards that principle. Through knowledge gained from technicians in the field and our 20+ years of experience in providing quality and reliable Mass Airflow Sensors to the aftermarket, we designed our Original MAF line with the end user in mind.

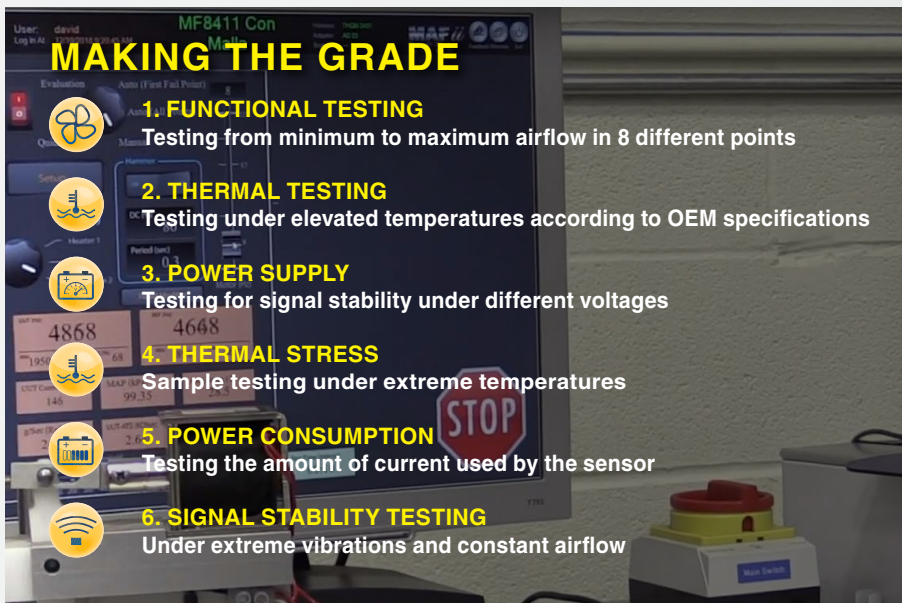
**EASE OF INSTALLATION** is key to cutting down on time and cost, delivering a solution with **EFFICIENCY** and **CONVENIENCE** as Blue Streak Electronics Original MAF sensors are offered both in sensor only when the probe is easily accessible, and sensor-with-body for when replacing the entire unit is the quicker option.







Take the online tour.



The product testing may begin with the manufacturer but at BLUE STREAK ELECTRONICS it doesn't end there. Once in our hands we take the quality control further with our own extensive certification procedure. Performed on-site in our own state of the art facility, each and every MAF that comes through our doors is rigorously tested and scrutinized by our expert technicians to meet all necessary requirements to ensure durability for the long drives ahead.

You can have confidence that every MAF passes inspection to be sent out with our personal seal of approval.



#### SONIC NOZZLE TESTING MACHINE

Tested with Sonic Nozzle machines to provide steady airflow for superior accuracy for calibration at +/- 0.25%



#### AIR FLOW TEST

Tested at 8 different points from idle to maximum flow for accurate readings throughout the air flow curve to +/- 5% tolerance



#### SHOCK TEST

Tested for shock and vibration for maximum stability



#### FINISH

Every Mass Air Flow is tested from -40°C to 120°C to maintain a 3% tolerance from the original readings our units are restored back to the OEM bare essentials.

## UNDERSTANDING MAF'S

### WHAT DOES A MAF SENSOR DO?

The Mass Air Flow (MAF) sensor measures the amount of air flow entering the intake manifold. The PCM uses this signal primarily for fuel control.

### WHERE ARE THESE SENSORS LOCATED?

The Mass Air Flow sensor is located in the intake ducting after the air filter.

### WILL A MALFUNCTIONING MAF SENSOR ILLUMINATE THE CHECK ENGINE LIGHT OR AFFECT VEHICLE OPERATION?

Yes, a failing sensor can illuminate the MIL, and may cause the engine to run rich or lean; the engine may lack power and produce "pinging" noises during part throttle driving.

### WHAT ARE THE COMMON CAUSES OF FAILURE?

Typically these sensors fail due to exposure to the under hood heat from engine operation or if debris collects on the sensor element.

### HOW TO DETERMINE IF THESE SENSORS ARE MALFUNCTIONING?

DTC codes P0171/P0174 may be set due to lean fuel mixtures and P0172/P0175 may be set due to rich fuel mixtures. DTCs P0101 through P0104 may also be set in the computer memory. A scan tool can be used to monitor the MAF data parameter during engine operation.

### WHAT MAKES THE BLUE STREAK ELECTRONICS MAF SENSORS THE BEST?

- We have complete control of the remanufacturing process from componentry to finished product.
- 100% Computerized Testing for all sensors using advanced proprietary test equipment.
- Common component failures are 100% replaced.
- Upgraded components are used to improve circuit reliability and performance

# 3 PROGRAMS TO CHOOSE FROM

Our products are available from state of the art distribution warehouses in the U.S., Canada and Mexico.



## REBUILD and RETURN

Program for scarce cores with supply shortage. Parts are turned around within 24 hours from Boca Raton FL for the USA, Concord ON for Canada & Tijuana BC for Mexico.



## SPECIAL ORDERS

**20 SKU's:** Program is suited for hard to find/short supply cores or pre-programmed units.

**Drop-ship delivery:** Orders received by noon ship the same day.



## STOCK ITEMS

Over **380 SKU's** stocked and ready to order.

**155 SKU's** available under brand.



## CORPORATE LOCATIONS

### USA

#### BLUE STREAK AMERICA

1197 South Rogers Circle  
Boca Raton, Florida  
33487 U.S.A.

1-888-826-2719 (toll-free)  
561-989-3755 (tel)  
561-989-9031 (fax)

info@bsecorp.com

### USA

#### BLUE STREAK AMERICA Distribution Center

2340 Enrico Fermi Drive  
San Diego, California  
92154 U.S.A.

info@bsecorp.com

### CANADA

#### BLUE STREAK ELECTONICS

30 Moyal Court  
Concord, Ontario  
L4K 4R8 Canada  
www.bsecorp.com

1-877-916-8324 (toll-free)  
905-669-4812 (tel)  
905-669-5179 (fax)

info@bsecorp.com

### MEXICO

#### BLUE STREAK INDUSTRIES

Boulevard Pacifico 14530,  
Nave 2, Parque Industrial  
Pacifico, Tijuana, 22643  
Mexico

+52 664 608 3433 (local)

info@bsecorp.com